

NEWS NOTES

SPRING 2008 | VOLUME 1 | ISSUE 1

MICHIGAN
TURFGRASS
FOUNDATION
MTF
Education • Research • Extension
FOUNDED 1957

WHAT'S INSIDE

3

INSIDE THE OFFICE

5

WINTERKILL AND A NEW
PUTTING GREEN FOR
IRRIGATION RESEARCH

6

IMPROVING NATIVE SOIL
ATHLETIC FIELDS

7

MTESP NEWS

8

MTF SCHOLARSHIP AWARDS

10

GDDTRACKER 2.0

12

GREAT LAKES TRADE EXPO

14

TURFGRASS 2010

PRESIDENT'S PERSPECTIVE



Terry Poley

As the newly elected President of the Michigan Turfgrass Foundation I am very happy and excited about the great year ahead. 2008 will be a mixture of fun, hard work, and positive results for the foundation, hopefully distributed equally. I am fully aware that as President I am only as strong as the rest of the board, which is

why this year will be fun and productive. Everyone on the board is hard working and committed to the future of the foundation. We also are glad to have Matt Anderson join the board this year; he is the only new member on the MTF board. We all look forward to working with Matt; he will be a great addition.

As I look toward the future of the MTF, in order to stay consistent with our mission, we will continue to focus on some very specific areas:

MEMBERSHIP:

Brian Schwehofer, our new Membership Committee Chairperson, has formed a very energetic committee consisting of various industry representatives and MSU faculty members. They are committed to finding new ideas and programs to build our membership numbers back up to the level we are used to. I know there are at least two groups of potential members; ones who have let their membership lapse for whatever reason, and people who we have not asked to join. Hopefully we are successful with both groups.

FUNDRAISING:

General fundraising has always been a challenge; however, with a dedicated staff to work on new ideas we should be well on our way. I know we always seem to go back to the same people when asking for donations and their support is much appreciated, but we will continue future to look for ways to develop a larger base to get the donations from.

We are excited to continue to working with the Golf Association of Michigan (GAM) to continue developing ways to build and grow the club support. This has been one of the best and most important means of significant contributions to the MTF. We look forward to a continuing our relationship with the GAM, as we move forward, with our mission of benefiting turfgrass research.

100% of our fundraising dollars go directly to research. Sue Shockey has done a great job with the research committee, which can be a thankless job at times. We look forward to her input along with her co-chairperson Dan Bissonette as they form their committee for this fall.

EDUCATION:

Education of our members is one of our goals for the MTF; we want to have to best-educated members possible.

- The GLTE continues to offer great educational opportunities, with room to grow.

Continued on page 2



EXECUTIVE COMMITTEE**PRESIDENT**

Terry Poley (2010) Pine Lake CC
Representing: Greater Detroit District

VICE PRESIDENT

Dan Boak (2008) Lawn Tech
Representing: Lawn Maintenance

TREASURER

John Fulling (2008) Kalamazoo CC
Representing: At Large

RECORDING SECRETARY

Brian Schwehofer (2010) Franklin Hills CC
Representing: At Large

DIRECTORS

Dan Bissonette (2008) Walloon Lake CC
Representing: Northern Mich. District

Paul Dushane (2010) Huron Clinton
Metro Parks
Parks, Sod, Cemetery
Representing:

Matt Anderson (2011) Lansing Lugnuts
Representing: Sports Turf

Randy Hahn (2010) Twin Lawn
Representing: Lawn Applicator

Jeff Holmes (2009) Egypt Valley CC
Representing: Western Michigan District

Jim Naugler (2009) Inkster Valley GC
Representing: Mid Michigan District

Sue Shockey (2009) Turfgrass, Inc.
Representing: Comm. Supplier

STAFF**EXECUTIVE DIRECTOR**

Donnelly K. Eurich

ASSOCIATE EXECUTIVE DIRECTOR

Nancy Hawkins

DIRECTOR OF FINANCE

Donna Devereaux

DIRECTOR OF GOVERNMENT RELATIONS

Vanessa Crocetto

DIRECTOR OF CONFERENCES AND EVENTS

Jenny Fedewa

DIRECTOR OF COMMUNICATIONS

Rebecca Holloway

MEMBERSHIP COORDINATOR

Robin Rings

ADMINISTRATIVE SUPPORT

Heather Frazier

GRAPHIC ARTIST

Marci Jacobs

MICHIGAN TURFGRASS FOUNDATION

3225 St Joseph | Lansing, MI 48917
517-327-9207 | FAX 517-321-0495
www.michiganturfgrass.org

PRESIDENT'S PERSPECTIVE

Continued from cover

- Field Day at the Hancock Turfgrass Center lets everyone see first hand what is happening with the latest research projects.
- The MTESP offers multiple opportunities throughout the season to educate you and keep you up to date on the latest environmental issues.

I would be remiss if I did not thank Tim Doppel for making the board work toward goal setting for the last three years, without his strong leadership we would not be in the position we are today. Although it has been a lot of hard work, many trips to Lansing and lots of extra meetings, it has been worth it.

We understand that all of our work would not be possible without members. We can always use input regarding how we are doing or how we can improve services for the membership, if you have any questions or comments please do not hesitate to call or email.

Terry Poley | Cell: 248.320.4911 | TerryPoley@gmail.com

UPDATE

FROM THE TURF CLUB

This year has been busy. At the beginning of the year we held our yearly Turf Club golf outing at the Brookshire Golf Course. The purpose of this golf outing was for the first and second year students to get to know each other better. The golf outing went great.

As a yearly tradition the Turf Club entered a float in the Homecoming parade. The parade was very fun and exciting a truly once in a life time experience for all involved in the float. It seemed everyone knew of the Turf Club as we road down the street. There are pictures at www.turfgrass.msu.edu/Homecoming.cfm.

We also attended the Great Lakes Trade Expo in Grand Rapids in the beginning of January. We had a lot of fun meeting local Superintendents and Representatives from the region. We sold 50/50 raffle tickets and Turf Club merchandise.

Last semester we held the annual competition between MSU and Penn State called the Cutter Cup. It was held in Galena Ohio, at Double Eagle Golf Club. Five players from PSU Turf Club and five players from MSU Turf Club took part of this competition. I am proud to say we brought the victory back to East Lansing with a victory 4-1 in match play. That was a repeat victory for MSU. There are pictures at www.turfgrass.msu.edu/CutterCup.cfm.

The Turf Club went to the GCSAA conference in Orlando Florida at the end of January. All the Turf Club members that went all agreed that the conference was a good experience for them. It was an eye opening experience meeting with Superintendents and Representatives from all the major companies that are in the turf industry.

In a few weeks will be having our end of the year get to gather at Tripper and have a billiards tournament, which is always fun. We have not yet held a meeting and pick next years President and board members. I hope this gives you a sense of what The Turf Club has done over the past year. Thank you for the support of the MTF.

Sincerely,
Andrew Dykstra
Turf Club President



INSIDE THE OFFICE

NOTES AND UPDATES FROM MTF EXECUTIVE DIRECTOR DONN EURICH

The Michigan Turfgrass Foundation (MTF) is a nonprofit organization which supports research at Michigan State University to find better turfgrasses and better methods of turfgrass maintenance.

The above declaration is the opening statement on the Michigan Turfgrass Foundation website. The MTF has been operating since 1957, providing funding assistance to MSU for turfgrass research. The MTF, under the leadership and vision of Gordon Lafontaine, has established itself as the national model for fundraising and turfgrass research support. As your new management team, we want you to know we take the goals and objectives of the MTF very seriously. Your staff in Lansing is already working to bring new and past contributors to the MTF, heighten awareness of the mission of the MTF and enhance the dollars available to the MSU faculty team to conduct their research.

BACK TO BASICS

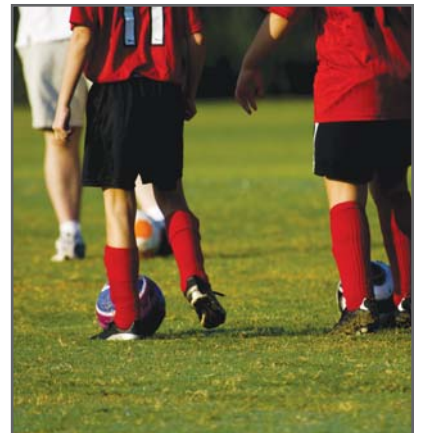
Over the past year, the MTF has directly applied for and received two grants. One grant would determine the feasibility of utilizing grass clippings generated at golf courses as a source of energy for use in pellet stoves. The second grant, received from the Department of Labor & Economic Growth, permits us to conduct a demonstration of bio-based products and bio-diesel use in the Michigan turfgrass industry. Traditionally, grant applications and expenditures have been facilitated by MSU faculty members with financial support from the MTF. While the two grants we are currently utilizing have merit, the MTF board concluded that future grant application and administration is a task best left to the MSU faculty. One goal of the MTF leadership is to devote maximum resources to growing MTF membership, enhance turfgrass education and increase research funding. By placing control and authority for grant opportunities with the MSU faculty, we are better able to dedicate the staff's efforts toward our primary mission.

A SNEAK PEEK AT GLTE 2009

Planning is already well underway for the 2009 Great Lakes Trade Expo (GLTE). The MTF will again play an important partner's role in the planning and execution of this event. Having been thrust into the driver's seat at MTF just weeks before the 2008 GLTE, needless to say my staff and I received a crash course in the MTF culture, including activities ranging from processing continuing educational "bubble sheets" to managing the annual silent auction. We will be working over the spring and summer to bring each of these activities a new, more efficient look and process. We plan to meet with representatives from The Department of Agriculture to discuss the earning, recording and retrieval of continuing education credits offered through the MDA Pesticide & Plant Pest Management Division. We hope to simplify and streamline and automate the on-site continuing educational credit process.

On another front, we also hope to borrow a concept demonstrated at the Golf Industry Show in Orlando which featured a web-based silent auction. Photos of each available auction item were posted on the silent auction website and bidders registered their name and address online and then could peruse the site at their convenience well before and during the Golf Industry Show, placing bids on items and exploring new additions. We believe this same formula would work well for the MTF silent auction at the Great Lakes Trade Expo. Administratively, this would save MTF considerable money, and permit bidders to explore products up for bid long before and during the event. Lower overhead should permit extra dollars to be saved and allocated to research. This will also modernize the process and the computer kiosks used to access the auction items will provide another excellent sponsorship opportunity.

Watch for quarterly newsletters, e-mails, mailings and website updates on more developments and activities from the MTF. I only touched on several of the many projects and ideas we are pursuing. Please feel welcome to contact me or any staff member, or stop in the MTF offices in Lansing. We look forward to getting to know you and bringing continued success to the MTF.



UPDATE

FROM THE HANCOCK TURFGRASS RESEARCH CENTER BY MARK COLLINS

The Hancock Center is grateful to all those that make donations and contributions to the turf center. In 2007 the total value of donations and contributions came to \$417,181. It would not be possible to maintain the turf center without the generosity of the turf industry.

The turf center is looking for a ride on fertilizer spreader. This would be used as another piece of equipment in our fertilizer calibration class. It would also be used to fertilize some of the areas of the turf center. If you have one that still works and would like to donate it to the turf center give me a call.

The turf center now has a pellet making machine. This machine will be used to experiment with grass clippings to convert them into pellets. These pellets can then be burned in a pellet burning furnace. In December I met with MSU's Agriculture Engineering department to discuss the pellet making machine. The Ag department is building a pellet burning furnace and pellet handling system. Through talks with them we were able to come to an understanding about working together to produce and burn pellets as a heat source. The Agriculture Engineers will be looking at different sources that can be turned into pellets for heat.

In 2009 The Hancock Center will be hosting Turf Producers International. This is an organization that represents turf producers from around the world. They will be coming here for a week long conference and trade show. It is a great honor to be able to host this event. The turf center previously hosted their event for the first time in 1999. Ten acres of turf has been set aside for sod cutting demonstrations and equipment show.

The conference room at the turf center is available to companies in the turf center. The room is on a first come first serve basis. Please call Mark at the turf center (517-353-3117) to schedule your next company meeting.

GOLF INDUSTRY SHOW A SUCCESS ACROSS THE BOARD!

If it's true that trade show participants vote with their feet, then the 2008 edition of the Golf Industry Show was a landslide victory for all involved.

Final figures from the event conducted January 31 to February 2 in Orlando reveal that records were set in a variety of categories. Overall attendance fell just shy of 26,000 at 25,737 to surpass the previous high of 23,099 established last year in Anaheim (an 11.4 percent increase). In terms of qualified buyers - those who can directly influence a purchase decision - 10,553 walked the floor, eclipsing the mark of 8,793 last year (a 20.0 percent increase). The trade show itself was the largest ever with 965 companies represented with exhibits covering 300,900 square feet. Last year's event in Anaheim featured 291,250 square feet (a 3.2 percent increase).

Show partners also announced they have signed a letter of agreement to execute a contract extending the show through 2014. Next year's event will be conducted Feb. 5-7 in New Orleans.

<http://www.gcsaa.org>

TRI-TURF DONATES TO TURFGRASS RESEARCH

MORE THAN \$15,000 RAISED

Tri-Turf, a Traverse City-based supplier of turfgrass maintenance products, recently donated more than \$15,000 to the Michigan Turf Foundation. The monies will be directed to The Gordon LaFontaine Endowment for Turfgrass Research which was created to fund the field of turfgrass science research through Michigan State University in East Lansing.

Funds were raised through the Tri-Turf winterization sales program in which Tri-Turf contributed five percent for every unit sold from September 1, 2007 to December 31, 2007.

"Tri-Turf wants to thank our customers, who really helped to contribute to this worthy project," stated Robert J. Reed, Controller. "We're proud to assist the foundation and help in the continuation of its research in turfgrass."

Locally founded by Tom Reed, Sr. in 1981, Tri-Turf marked its twenty-fifth year in business in 2007. Tri-Turf services the turf industry by offering a full line of maintenance products throughout the state of Michigan and employs 19 people.

The company's focus is captured by its "Customer Satisfaction" credo. For more information, visit triturf.com or call 231-943-8343.



WINTERKILL AND A NEW PUTTING GREEN FOR IRRIGATION RESEARCH IN 2008

DR. KEVIN W. FRANK

It's been another up and down winter in Michigan. I have a hard time remembering how warm the weather was during the GLTE with a projected night time low temperature in the single digits again tonight. The varying cycles of snow and melt and bouncing temperatures have once again caused me to wonder about potential winterkill damage to turfgrass. In 2007 we concluded our second year of research on investigating reestablishment methods for putting greens following simulated winterkill injury. Reestablishing turfgrass in damaged areas can be very challenging in the spring due to cool, cloudy conditions that often persist. Due to the scattered kill patterns often resulting from winterkill, seeding can be difficult. Inter-seeding creeping bentgrass into dead areas on the greens has given mixed results. General thinking in the turfgrass industry is that reseeded damaged greens with the low mow, high density creeping bentgrasses, such as the A and G series, or the new Poa-aggressive bentgrass varieties such as T-1 or Alpha is the best option. However on greens that are predominantly annual bluegrass, some golf course superintendents have tried to encourage the annual bluegrass to reestablish the damaged areas by simply scratching the surface of the dead areas to allow the annual bluegrass to germinate or by harvesting annual bluegrass seedheads by collecting clippings and then spreading them on the damaged areas of the green.

Currently there are many different programs proposed for reestablishing either Poa annua or creeping bentgrass putting greens following winterkill but few if any of these techniques have been proven through research to be the best. Our research is investigating the effects of fertilization programs, turfgrass cultivar or species, and protective covers on turfgrass reestablishment. The most important benefit to superintendents that we aim to determine is what reestablishment methods can be used to speed recovery from winterkill damage and reduce the time golf course putting greens need to be closed in the spring.

The experimental design for each putting green is a 4 cultivar/species x 2 nutritional program x 2 cover factorial with three replications. As soon as weather conditions permit in the spring the damaged green was seeded with three

creeping bentgrass cultivars and annual bluegrass. The creeping bentgrass cultivars A4, Providence, and T-1 were seeded into a putting green that was formerly creeping bentgrass and a predominantly Poa annua putting green. Prior to seeding, the job-saver aerator attachment was used to create a dimpled depression in the green where the seed could germinate. Annual bluegrass seed heads were collected from an adjacent putting green by collecting clippings following mowing. The seed heads were then spread onto the plots to facilitate germination. Immediately following seeding and application of the annual bluegrass clippings/seed head mix, a light sand topdressing was applied to all plots.

A starter fertilizer (19-26-5) was applied at 0.5 lb. N/1000 ft.² at seeding. Starting at the first sign of turfgrass emergence, the two fertilizer treatments were initiated:

1. Granular starter fertilizer (19-26-5) applied at 0.3 lb. N/1000 ft.²/every three weeks.
2. Urea (46-0-0) applied in solution weekly at 0.1 lb. N/1000 ft.²

The third factor that was investigated was the use of a protective plastic cover. The presence or absence of a simple transparent plastic cover was assessed. The cover was placed on the plots every night when air temperatures were expected to be below 50 °F.

RESULTS

As in our initial trial in 2006, there were no significant differences in the rate of turfgrass establishment among the creeping bentgrass cultivars. The creeping bentgrass cultivars did establish quicker than trying to use annual bluegrass seedheads collected from adjacent areas and introducing the seed into the killed area. Once again we did not see a fertilizer treatment effect nor did we see a cover effect with the one exception of there being a positive effect of using protective covers on the creeping bentgrass cultivar A-4. Overall, the rate of establishment for the turfgrass on the previously 100% annual bluegrass putting green was faster than the predominantly creeping bentgrass putting green. We believe the difference in establishment rate was due to rootzone mix effects. The annual bluegrass putting green has a native soil rootzone profile while

the creeping bentgrass putting green has a USGA specified sand based rootzone. The moisture holding capacity and nutrient holding capacity of the native soil annual bluegrass putting green were likely factors in enhancing turfgrass reestablishment. We also conducted another study in 2007 that investigated the effects of several different fertilizer programs and found that frequent, low rate fertilizer applications were more effective in reducing time to complete reestablishment than monthly fertilizer applications. Further information on the winterkill research can be found at www.turf.msu.edu/2007_Research_Reports.htm. Funding support for this research has been provided by the MTF, MSU Project GREEN, GCSAA, and the Northern Great Lakes Superintendents Association.

NEW PUTTING GREEN FOR IRRIGATION RESEARCH

In 2008, we will construct a new USGA specification putting green that will be used for conducting research on the effects of different irrigation programs on both creeping bentgrass and Poa annua. A grant from the Michigan Agricultural Research Station will fund the construction of the green. Plans are to build 18 separate 40 ft. x 40 ft. USGA specification putting greens. Each green will have separate irrigation control to enable research to test different irrigation programs. Nine of the putting greens will be seeded to creeping bentgrass and nine will be established to Poa annua. Different fertilization programs will also be tested on each of the irrigation blocks. This will be a multi-year project and data collection will be diverse. Turfgrass quality, soil organic matter, surface firmness, leachate, infiltration, rooting, disease incidence, soil nutrient and tissue tests are some of the data that will be collected. Research grants have already been submitted to Project GREEN at MSU and the O.J. Noer Turfgrass Foundation. Grants will also be submitted to the USGA and GCSAA in the coming year.



IMPROVING NATIVE SOIL ATHLETIC FIELDS WITH CUMULATIVE SAND TOPDRESSING AND DRAIN TILE INSTALLATION

ALEXANDER KOWALEWSKI AND J.N. ROGERS, III

INTRODUCTION

The majority of Michigan's high school athletic fields are constructed on native soil, incapable of providing adequate drainage during periods of heavy rainfall. This in combination with heavy use, results in turfgrass failure, reduced traction, and stability. Current solutions include complete field renovation. These processes are very costly and render the athletic surface temporarily unusable. Therefore, not an option for schools systems with minimal budgets and high annual use requirements. A possible alternative to complete renovation is the installation of a subsurface drainage system and subsequent sand topdressing applications.

Drain tile installation and subsequent sand topdressing applications will provide high school athletic fields with a cost effective solution to impeded field playability that does not interrupt field use for an extended period of time.

OBJECTIVES

1. Evaluate the effects of varying amounts of sand used for single topdressing applications on recently established turfgrass health and vigor.
2. Evaluate the effects of varying cumulative amounts of sand topdressing on turfgrass wear tolerance and surface stability.
3. In combination with sand topdressing, establish intercept drain tile spacing necessary to prevent prolonged saturated surface soil conditions thereby improving turfgrass wear tolerance and surface stability.

RESEARCH

Research on the effects of varying sand topdressing application rates on juvenile turfgrass was initiated March 7, 2007 at the Michigan State University (MSU), Plant Science Greenhouses, East Lansing, Michigan and concluded July 20, 2007. A variety of newly established cool-season turfgrass received sand topdressing at rates ranging from 0 - 0.33 inch.

Results indicate that sand topdressing applications, regardless of rates, had no long term effects on turfgrass health (injury), percent cover, or growth.

Field research on the effects of cumulative sand topdressing applications to compacted topsoil was initiated at the Hancock Turfgrass Research Center (HTRC), East Lansing, Michigan, April 10, 2007. Newly established turfgrass received cumulative topdressing applications, ranging from 0 - 8, applied at a 0.25 inch depth per application, with a well-

graded 90% sand - 10% silt/clay topdressing material from July 11 to August 15, 2007. All research treatments were trafficked using the Cady traffic simulator (CTS). Half of the treatments were trafficked at a low rate (one application per week) from July 11 to August 15, 2007 to simulate off-season use, and then all treatments were trafficked at a high rate (two applications per week) from October 10 to November 3, 2007.

Results indicate that while cumulative topdressing applications have no effect on turfgrass coverage, two and four annual applications provided the same or increased turfgrass stability characteristics (Shear Vane, Clegg Shear Tester and Clegg Impact Soil Tester), while six and eight applications reduced stability, in comparison to the control. Off-season simulated traffic not only reduced turfgrass cover, but also decreased stability characteristics.

Field research on intercept drain tile spacing, in combination with sand topdressing, was also initiated at the HTRC, April 10, 2007. Research boxes 5.5 ft wide x 8 - 27 ft long (depending on drain tile spacing) were constructed and a series of drainage pipes were installed in the research boxes to collect surface, drain tile, and subsoil drainage. Newly established turfgrass then received four topdressing applications applied at a 0.25 inch depth per application with the same well-graded topdressing material described above from July 11 to August 15, 2007.

Time domain reflectrometers were used to measure soil moisture levels. Drainage and soil moisture data were collected after a series of irrigation events. All research treatments were trafficked using the CTS at a high rate (two applications per week) from October 10 to November 3, 2007.

Results indicate that when 2.5 cm of sand topdressing has been applied drain tiles regardless of spacing will prevent the development of large quantities of surface runoff; however a drain tile spacing of 4 m or less is required to reduce the soil surface moisture levels after a 1.27 cm simulated rain event in comparison to the control. Treatments with drain tiles, regardless of spacing, provided turfgrass coverage greater than the control. In terms of stability characteristics treatments with drain tile spacing 4 m or less provided the greatest stability.

The authors wish to thank the Michigan Turfgrass Foundation and Project GREEN for their support of this project.

DRAIN TILE INSTALLATION AND SUBSEQUENT SAND TOPDRESSING APPLICATIONS WILL PROVIDE HIGH SCHOOL ATHLETIC FIELDS WITH A COST EFFECTIVE SOLUTION TO IMPEDED FIELD PLAYABILITY THAT DOES NOT INTERRUPT FIELD USE FOR AN EXTENDED PERIOD OF TIME.



MTESP NEWS

A WINNING COMBINATION: TPC ACTIVITIES GARNER ENVIRONMENTAL AWARDS

BY: KATHY ANTAYA, CGCS, MTESP FIELD STAFF

The Nicklaus-designed Tournament Players Club in Dearborn (TPC Michigan) is well regarded for its challenging layout and immaculate maintenance. But Superintendent John Kulka ensures theirs is not just "another pretty face," a.k.a. upscale golf course. As part of his maintenance program, Kulka undertakes a wide range of activities that benefit natural resources, from habitat enhancements to pesticide handling to green buying and recycling. Thinking "green" means more than grass at TPC! As a member of the Michigan Turfgrass Environmental Stewardship Program (MTESP), TPC seeks to increase their protection of natural resources through business savvy choices that also help them comply with state and federal environmental regulations. Also since 1994, the course has been certified in Audubon International's Cooperative Sanctuary Program.

Kulka involves his staff in "green thinking," as well. They show a keen interest in alternative products that are less hazardous or toxic, and are quick to embrace new practices that protect the environment. The staff understands environmental stewardship is a part of their work, not just an extra duty. A recent MTESP site visit revealed a neat, safe and clean shop with various energy efficient measures. Their grounds include a top-notch mix/load pad and chemical storage facility, as well as buffer zones throughout the course.

TPC Michigan has earned public praise for its environmental work, also. In 1996, Audubon International deemed it a "model of ecological restoration" with the John James Audubon

Environmental Stewardship Award. More recently in 2002, '03, '06 and '07, their efforts garnered a Chapter or Merit Honor for the Environmental Leaders in Golf Award (ELGA), sponsored by GCSAA and Golf Digest. These accolades are due in part to Kulka's willingness to write about and promote TPC's environmental efforts. He says, "So many Michigan courses do so many good things! We aren't much different from the rest, we just seek out opportunities to showcase our work." Indeed, the work of Michigan turfgrass managers provides positive benefits to our natural resources. It is just a matter of publicizing that work! As part of its mission, MTESP recognizes environmental achievements and coordinates with various Michigan organizations to promote our members.

As for national awards, Kulka encourages all Michigan golf courses to apply for the ELGAs. He stated, "Compared to facilities around the country, Michigan courses are doing so much more than average; we should be dominating the ELGA lists!" ELGA nominations are due to GCSAA in October. Nominees are then notified and must complete an application form. More information is available on line at www.gcsaa.org. "The application process isn't complicated, but I would be happy to share my experience with anyone who contacts me," Kulka volunteered.

If you are a turfgrass manager in Michigan, it is likely you already do many things that protect natural resources, benefit the environment, and make good business-sense. With just a little more thought and planning you can do so much more and receive recognition for your company.

Protect the environment, save money, good PR... a winning combination! Sometimes, the most difficult part is where to start. The MTESP is designed to make it easy to get going! So visit our website (www.mtesp.org), or call the office (517.355.0271 x 145) to set up an appointment and get started today!



THE GRASS IS GREENER!

THE CREAM OF THE CROP ONCE AGAIN PARTICIPATED IN THE MTF SCHOLARSHIP AWARDS. MTF AWARDED MORE THAN \$8,500 OF SCHOLARSHIP MONIES WITH A COMBINED TOTAL OF OVER \$100,000 BETWEEN ALL GREEN INDUSTRY SEGMENTS.

IF YOU ARE A STUDENT WHO DID NOT APPLY FOR ANY ONE OF THESE SCHOLARSHIPS, YOU TRULY MISSED AN EVER GROWING OPPORTUNITY TO INCREASE THE GREEN IN YOUR WALLET.

THE SCHOLARSHIP PROCESS STARTS IN THE FALL WITH ENTRIES DUE IN NOVEMBER AND WITH INTERVIEWS IN DECEMBER.

IF YOU NEED SOME GREEN, THE MTF IS HERE TO PUT SOME IN YOUR WALLET AND UNDER YOUR FEET.

CONGRATULATIONS TO ALL,
DAN BOAK



MSU Hal Vogler Memorial Scholarship goes to Scott Brugler and Albert Bertram presented by Dr. Rogers (middle).



THE 2008 SCHOLARSHIP WINNERS LEFT TO RIGHT
Back: James Lappetito, Russell Bray, Brain Garcia, Tyler Wegner, Paul Giordano, Dominic Cercone, Chris Parsons, Brandon Bordner, Richard Collins, Albert Bertram
Front: Jeffrey Monette, Scott Brugler, Andrew Snider, Matt Belecki, Adam Stewart, Francisco Cornejo, Kevin Doyle, Jared Milner



The Michigan State University Award for Tuck and Becky Tate Scholarship goes to Matt Belecki and Chris Parsons presented by Dr. Rogers. (Brandon Drzewicki not in photo)



Winners of the MSU Charles and Frances Osterman Scholarship James Lappetito, Jeffrey Monette, Paul Giordano. (Jeff Dunne not in photo)



The winners of the MSU Toro Foundation Scholarship Adam Stewart, Brain Garcia, Andrew Snider and Richard Collins. (Jay Hileman not in photo)



Kevin Doyle receiving the MTF Hancock award from Dan Boak.



Jared Milner receiving the MTF Kramer award from Dan Boak.



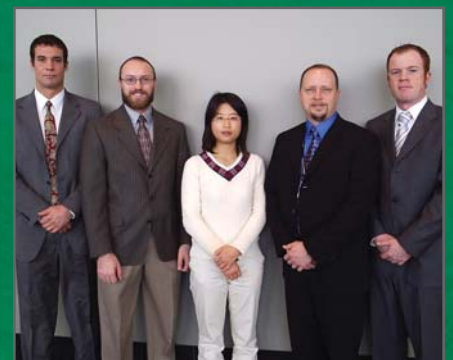
Dominic Cercone receiving the MTF Payne award from Dan Boak.



Russell Bray receiving the MTF Sports award from Dan Boak.



Wen Tian being honored with the MTF American-Sino award by Dan Boak.



Dominic Cercone, Russell Bray, Wen Tian, Dan Boak, Kevin Doyle the 2007-2008 Michigan Turfgrass Foundation Award winners.



National Awards from Golf Course Superintendents Association of America Scholarship goes to Tyler Wenger and Chris Parson with Dr. Rogers.



The National Award from the Trans Mississippi Golf Association Award goes to Brandon Bordner, Chris Parsons, Paul Giordano and Dominic Cercone. (Not in photo: Rick Goltowski, Michael Donovan.)



National Awards from Golf Course Superintendents Association of America for Valderrama Award goes to Francisco Cornejo presented by Dr. Rogers.



The National Award from the Sports Turf Managers Association SAFE scholarship goes to Russell Bray presented by Dr. Gilstrap.



Michigan Golf Course Superintendents Association award goes to Jared Milner and Paul Giordano presented by MiGCSA Board Members, Greg Pattinson, Scott Pulaski, and Kirk Carls.



Michigan Sports Turf Managers Association award winner James Lappetito with MTF board member Chad Follis. (Marshall Brice not in photo)

WHAT CAN GDD DO FOR YOU?

GDDTRACKER 2.0 | WWW.GDDTRACKER.NET

BY RONALD CALHOUN, MICHIGAN STATE UNIVERSITY

GDDTRACKER AT-A-GLANCE

GDD-based tracking
of turfgrass pests

Receive custom email
alerts for your location

Color coded map
updated daily

Forecast slider can
look up to five days
into the future

346 registered
users in 2007

Growing degree-days are a more reliable means of predicting physiological plant status than calendar timing. In a recent survey only 10 percent of Michigan golf courses have weather stations on-site. In contrast, over 90 percent have access to the internet from their property. The MSU Growing Degree Day web site (www.gddtracker.net) uses data from more than 80 weather stations in Michigan, Wisconsin, Illinois, Indiana and Ohio to provide turf managers with information they can use to predict the pest activity and application timing in the spring. GDDTracker originally was used to help golf course superintendents predict application timing for annual bluegrass seedhead suppression. Superintendents can get customized information for their location by entering their zip code.

As a result of a grant from Project GREEN additional models have been developed for grassy and broadleaf weeds. Research results identified germination windows for crabgrass (*Digitaria* spp.) and annual bluegrass that have been correlated to GDD. Research conducted at the Hancock Turfgrass Research Center indicated that postemergence broadleaf herbicide applications are most effective if made in the autumn when soils temperatures are below 60 degrees F at a 0-2 in. depth. It is not always practical to make applications at this time due to interference from leaf litter and

frequent precipitation. Further research has indicated that certain perennial broadleaf weeds can be effectively controlled at the end of their flowering cycle. Flowering duration varies by species from 10-42 days. Researchers at MSU have observed and recorded the flowering times for 28 turfgrass weeds over the last three years. The relative order of flowering did not change for each season, however, the absolute time of flowering did change as it relates to calendar and duration. Flowering times can be calibrated with GDD information from each season. This information will help turfgrass managers predict flowering times for specific weed pests in order to better schedule rescue treatments of postemergence broadleaf herbicides.

GDDTracker produces a weed identification/flowering-time poster in January 2007. The posters are available for \$5 and have been made available at various association meetings. The GDDTracker web site was re-designed in March 2007. The new system includes weather stations from across Michigan and parts of Ohio, Illinois, Indiana and Wisconsin. The weather data is processed and uploaded into the system automatically every night. The GDDTracker Team worked closely with MSU's Enviroweather Office to automate the data feed. The re-designed web site lets users select their location and which models they would like to

Want a heads - up on WEEDS?

FREE ACCESS TO GDDTRACKER.NET ANYTIME!

ORDER YOUR WEED POSTER TODAY

Fill out and Send Check or Money Order to:
GDDTRACKER
286 Plant and Soil Sciences Building
East Lansing, MI 48824-1325

[] @ \$5.00 (+ 2.95 P/H)
24 X 36 Weed - ID Poster

[] @ \$50.00 (+ 2.95 P/H)
LAMINATED 24 X 36 Weed-ID Poster

NAME: _____

ADDRESS: _____

CITY: _____

STATE: _____ ZIP: _____

email: _____

follow. Automatic emails are generated when models mature for each user's region. There were 346 registered users of GDDTracker.net in 2007, up from 143 in 2006. New models were added to the system including, crabgrass germination and preemergence timing, annual bluegrass seedhead production - spring and fall germination and preemergence timing, broadleaf weed activity and flowering timing

and early-season dollar spot prediction. The URL is www.gddtracker.net.

The Growing Degree-Day Tracker poster has been a great tool to introduce clientele to the use of growing degree-days. GDDTracker.net has been well received and more than doubled its user base in 2007, generating requests for expansion from Indiana, Wisconsin and Ontario.

GDD Tracker from Michigan State University

MSU Poa Seedhead Flush (GDD 32)

- Home
- About
- Send Feedback
- Receive Alerts
- Seedhead Flush
- Spring Broadleaf
- Weed Flowering
- Crab Germination

As of 12:01 AM, May 28th, 2007

East Lansing MI 48824

GDD: 1424

last week next week

Latest Updates & Notes

Poa Seedheads and Crabgrass

May 17th, 2007

Now is the time when you find out if your applications for seedhead suppression were successful. *Poa annua* is flowering profusely (heavy range) throughout most of the region. Crabgrass germination is in full swing (1-2 leaf crabgrass in East Lansing). The next couple weeks is an excellent time for broadleaf herbicide applications. If you have crabgrass germination and broadleaf weeds you could tankmix dithiopyr or quinclorac with your broadleaf 3-way herbicide.

GREAT LAKES TRADE EXPO

The 2008 Great Lakes Trade Expo (GLTE) was held in Grand Rapids, Michigan during the week of January 7 - 9. The Expo is held at the beautiful DeVos Hall and is hosted by Michigan Turfgrass Foundation (MTF), Michigan Nursery and Landscape Association (MNLA), and Arboriculture Society of Michigan (ASM).



The week started with the Sunday night kick off at GP Sports Bar in the Amway Grand Hotel. This evening is sponsored by Turfgrass Inc. and Grigg's Brothers. The evening consisted of a wonderful buffet of food and socializing time. It is

a great opportunity to visit with friends as well as make new friends or business contacts. Thank you Turfgrass Inc. and Grigg's Brothers for once again providing the Sunday evening activities.

Starting the conference week with MTF business seemed like a very fitting occasion. So at 7:30 a.m. Monday, the MTF annual meeting was held and a breakfast buffet was also offered. The meeting was so successful that we may host it again on Monday morning in 2009. This decision will be made as planning comes together for 2009.

Immediately following the annual meeting was the educational kick off with eight educational tracks and more than 40 different speakers. It was an educational buffet that was fully loaded! Topics ranged from "Green Roofs" to "What You Thought You Knew About Putting Green Mowing". There were so many good topics and speakers presenting that if you didn't plan where to be for the next talk you were going to miss out. It paid to do your homework on where to be when. The multiple educational tracks were nice for offering more topic selections.

After the feeding frenzy of educational information all day long on Monday, the evening started with a GLTE reception. The reception is put on by the vendors of the trade show as a thank you to all of the conference participants. This reception offered food, drinks and a lot of socializing time. If you haven't attended this event or any of the other social events, you were depriving yourself from valuable conference activities. As many of you know, you can learn valuable information from talking to your peers when the right conversation presents itself. It will be in your best interest to take full advantage of these activities provided.

When you move into Tuesday and Wednesday the days are filled with more great education. The next unveiling was the opening of the trade show at 10:00 a.m. Tuesday morning, after absorbing some more great educational information. The trade floor consisted of 529 booth spaces. It only gets better each year and the products coming to us are the right products used in the industry. Taking advantage of the trade show allows the consumer to maximize their productivity time when researching products. The products and the experts are present to talk with you. This floorshow is like the one stop shop for your industry needs.

To keep the industry moving forward Tuesday evening has played host to the VIP Reception. This reception is extremely important to recognize university officials, state officials, state politicians and other industry dignitaries. Without many of these people and their organizations the turf and landscape industry would not be what it is today. Thank you for your continued support and leadership to make the green industry a success in the great state of Michigan.

Wednesday morning was back to education and then off to the trade show. Later in the day the silent auction came to a close and the student awards were presented. There were many other activities happening throughout the week. The three days were action packed with an enormous amount of information. Make sure you attend the 2009 Expo because it is only going to get better. The committee is already putting education and events together.

This conference could not happen without all of the volunteers that help. Thanks go to Dr. Kevin Frank, Ron Calhoun and the turf team. Karen O'Dell helped with the move in and out for the trade show. The rest of the committee that helped set the educational agenda are Chad Follis, Ben Youst, Eric Davey, John Kulka, Kathy Antaya, John Fulling, Doug Johanningsmeier, Ron Dahlin and the Eurich Management Team. The MNLA Management staff was the main administrative group and they were great to work with.

The total team behind the scene was larger than what was listed. Thank you to all of the individuals who helped making this event a success and the vendors for making this GLTE a reality. Without your support this event could not happen.

JEFF HOLMES
MTF CONFERENCE CHAIR



Top left to right: Bruce Wolf from White Pine National Golf Club, Jeff Holmes from Egypt Valley, Brian Holmes' Son, Chris Holmes from Lost Lake Woods Club, Jeff's Nephew

Bottom: Jason Roznowski from Treetops Resort, Doug Kendziorski from Black Lake Golf Club and Brian Holmes from Lost Lake Woods Club



Jim Timmerman, superintendent at Stoneycroft Hills Country Club with Tom Mason retired superintendent from Birmingham Country Club, who was awarded the meritorious service award and MTF President Terry Poley.



Mark Wilson from Valhalla Country Club in Louisville, Kentucky and Dale Barger, Midwest Turf Equipment making a visit to Michigan for the show!



Rebecca Holloway with MTF board members Randy Hahn and Dan Boak enjoying the MiGCSA reception.



View from above of the silent auction.



Kimberly Olson from Harrell's and Bruce Wolf from of White Pine National Golf Club enjoying an evening reception.



David Legg, Regional Sales Manager for Jacobsen equipment with Dan Billette of the Bloomfield Hills Country Club and MTF President Terry Poley from the Pine Lake Country Club at the Great Lakes Trade Show.



ANNUAL FUND

Annual contributions, that are not designated to one of the endowments, are the lifeblood of the Michigan Turfgrass Foundation. These contributions fund annual research and support grants to MSU faculty. All grant requests are first reviewed by an industry committee, ranked in priority by this committee, and then referred to the MTF Board of Directors for action. Annual funding helps solve current research problems in turf and supports the MSU Turf Team in meeting the extension needs of turf managers in Michigan.

LAFONTAINE ENDOWMENT

The Gordon LaFontaine Endowment for Turfgrass Research was created to establish a solid source of funding for basic research in the field of turfgrass science. Basic research tends to be longer term, more involved and more expensive than applied research. The very nature of this research requires a stable source of funding. Donations to the LaFontaine Endowment create a legacy to fund research long-term, as these donations work in perpetuity to generate interest for fundamental research projects. Donations to the LaFontaine Endowment help solve tomorrow's problems today.

RIEKE ENDOWMENT

Dr. Paul Rieke is a dedicated MSU faculty member who made major contributions to turfgrass science through research, education, and outreach and shared his knowledge and expertise through the guidance of many graduate students. The Paul Rieke Turfgrass Endowed Graduate Assistantship was established by the Michigan Turfgrass Foundation with generous contributions from Dr. Rieke, friends, family and colleagues at Paul's retirement.

As part of Turfgrass 2010, the Rieke Endowment will help fund the communication and outreach efforts within the turfgrass industry, the Michigan Turfgrass Foundation, and the MSU Turf Team.

FOUNDERS SOCIETY

The Founders Society is an endowment used to purchase specialized research and support equipment for the turf program at MSU. For example, donations to this fund will provide funding to install additional lysimeters at the Hancock Center to expand research on nutrient fate and water movement — key research validation to better position the turfgrass industry for the continuing statewide debate on water policy and nutrient management. Funding is also needed to update the Hancock Center, including new office equipment and a heating system for the Fuller Building.

MICHIGAN TURFGRASS ENVIRONMENTAL STEWARDSHIP PROGRAM (MTESP)

The MTESP is the premier environmental stewardship program in the country. This program continues to address the regulatory and environmental issues of the turf industry in Michigan. The MTESP continues to expand its offerings to the golf segment and is beginning to reach out to other turf segments for environmental assistance. Donations to the MTF can be earmarked to support the MTESP.





MICHIGAN TURFGRASS FOUNDATION OPPORTUNITIES FOR GIVING

IMPACT THE LIVES OF MICHIGAN CITIZENS AND PROTECT OUR NATURAL RESOURCES BY MAKING YOUR TAX-DEDUCTIBLE DONATION TO TURFGRASS 2010!

ANNUAL RESEARCH FUND — annual MSU research & support projects _____

FOUNDER'S SOCIETY — for purchase of specialized research equipment _____

GORDON LAFONTAINE ENDOWMENT — supports basic research _____

PROFESSOR'S (RIEKE) ENDOWMENT — provides support for Graduate Assistant _____

MICHIGAN TURFGRASS ENVIRONMENTAL STEWARDSHIP PROGRAM _____

TOTAL ENCLOSED: \$ _____

NAME _____

COMPANY _____

ADDRESS _____ CITY _____ STATE _____ ZIP _____

PHONE _____

PLEASE CONTACT ME REGARDING OPPORTUNITIES FOR GIVING.

*Make checks payable to Michigan Turfgrass Foundation.
Send payment to MTF, 3225 W. St. Joseph, Lansing, MI 48917
Fax: (517)321-0495*

- Cash
- Check
- Other

CREDIT CARD PAYMENTS ACCEPTED:

- M/C
- VISA
- Discover

CARD NUMBER _____ EXP. DATE _____

SIGNATURE _____

The Michigan Turfgrass Foundation accepts gifts and pledges via cash, check or credit card for the Annual Fund, MTEFP, or any of the three endowed funds. The MTF can also accept planned or immediate gifts from estates, insurance, real estate, stocks, bonds and other negotiable securities for any fund. The MTF can also work with donors through the MSU Foundation to set up a variety of trusts. The MTF is a 501c.3 non-profit foundation. Donations to the MTF are tax deductible (check with your accountant or financial planner) and donors receive full gift credit from Michigan State University for any donation to the MTF.

Contact Donna Devereaux at (517) 327-9207 to make cash donations or pledges to the Turfgrass 2010 campaign. Contact Donn Eurich for non-cash gift, planned giving, wills and trusts at (517) 327-9207

MICHIGAN TURFGRASS FOUNDATION
3225 ST JOSEPH HIGHWAY
LANSING, MI 48917
(517) 327-9207
FAX (517) 321-0495

MSU TURF TEAM & THEIR SUPPORT STAFF

CROP & SOIL SCIENCES

Dr. Suleiman Bughrara
Turfgrass Breeding and Genetics
517-355-0271 x 142
bughrara@msu.edu

- Jianping Wang—Graduate Student
- Han Zhao—Graduate Student

Mr. Ron Calhoun
Enviro. Turfgrass Specialist
517-355-0271 x 139
calhoun@msu.edu

- Aaron Hathaway—Research Assistant II

Dr. James Crum
Soils
517-355-0271 x 134
crum@msu.edu

Dr. Kevin Frank
Turfgrass Extension
517-355-0271 x 147
frankk@msu.edu

- Jeff Bryan—Research Assistant II
- Sang-Kook Lee—Graduate Student
- Erica Bogle—Graduate Student

Dr. David Gilstrap
Coordinator 2-Year Sports and
Commercial Turf
517-355-0271 x 140
gilstrap@msu.edu

Dr. Thom Nikolai
Turfgrass Academic Specialist
517-355-0271 x 133
nikolait@msu.edu

Dr. John N. Rogers III
Coordinator 2-Year Golf Turf
517-355-0271 x 136
rogersj@msu.edu

- Alexander Kowalewski—
Graduate Student

BOTANY AND PLANT PATHOLOGY

Dr. Joe Vargas
517-353-9082
vargas@msu.edu
Ron Detweiler—Research Assistant III
Nancy Dykema—Research Assistant III

MTESP

Ms. Debbie Swartz, Coordinator
517-355-0271 x 145
swartzd@msu.edu

- Ernie Abel—Stewardship Specialist
- Kathy Antaya—Stewardship
Specialist
- John Johnson—Stewardship
Specialist

ENTOMOLOGY

Dr. David Smitley
517-355-3385
smitley@msu.edu

- Terry Davis—Research Assistant III
- Kevin Newhouse—Technician

HANCOCK CENTER

Mr. Mark Collins
Farm Manager
517-353-3117
Frank Roggenbuck
Irrigation Specialist

HORTICULTURE

Dr. Suzanne Lang,
Turfgrass Stress Physiology
517-355-5191 x 377
langs@msu.edu

- Tara Valentino—Technician

MTF RESEARCH GRANTS

NAME	RESEARCH TOPIC
Dr. Suleiman Bughrara	Gene/molecular Marker Discovery for Drought Tolerance in Fescue
Ron Calhoun	Species and Cultural Practice Interaction Weed Garden T3 Weed Program Annual and Rough Bluegrass Management Programs Approach for Poa annua Control (Golf) Travel
Dr. Kevin Frank	Long Term Nutrient Fate Winterkill Phosphorus Fertilization Irrigation, Organic Matter Mgt, Nutritional Programs for putting greens Extension Program Support/Travel Transplanting Sod on Frozen Ground
Dr. David Gilstrap	Commercial Cultivar from Bermudagrass
Dr. Thom Nikolai	Root Zone/Plant Leaf Tissue Nutrient Concentration Study
Dr. Trey Rogers	Sand Cap Build Up Systems for Michigan Athletic Fields
Dr. David Smitley	Grub Control Efficacy Study Biological Control of Japanese Beetle in Michigan New Long-term Management Strategies for Ants on Golf Courses
Dr. Joe Vargas	Disease Resistant Bentgrass

MTF RESEARCH AND SUPPORT FUNDED FOR 2008 = \$113,900